

The PresbyPost



A PUBLICATION OF THE STATE COLLEGE
PRESBYTERIAN CHURCH
PENNSYLVANIA



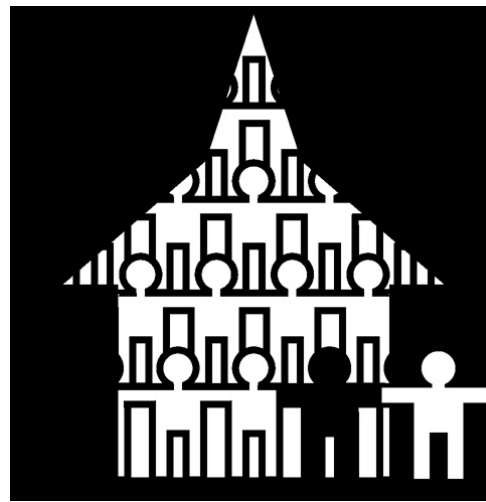
SEPTEMBER 2008

Inside This Issue

Tale of Two Campaigns	2
All in the Family	3
Sunday Morning Programs	4
LOGOS & FISH News	4
Greetings from Thailand	5
Chancel Choir Begins	5
Krislund Campaign Update	6
Adult Education for September	6
September Calendar	7

**Deadline for
October PresbyPost
Friday, September 12, 2008**

Deadline for November PresbyPost
Friday, October 17, 2008



How Do You Fit Into Our Church Family?



LIFE Groups

Bible Study

Pastor's Class

CC Bridge

Chancel Choir

Spirituality Task Force

Candlelight Choir

Small Groups

Handbell Choir

GIFT



Building and Property

Education Ministry

PresbyPost

Adult Education

Children and Worship

Prayer Group

Mission Ministry



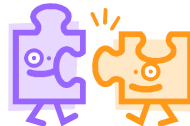
Creative Movement and Music

LOGOS Chrysalis

Boy Scouts

Men's Covenant Group

FISH



LOGOS Geckos

Agape

Stay and Play

Praying Hands

Presbyterian Women

Westminster Presbyterian Fellowship

Deacons

**SCPC has many programs
starting the new program year.
Find the spot where you fit!**

Worship

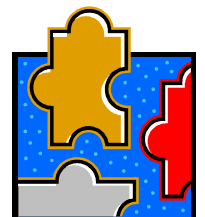
Congregational Fellowship



Sunday School

Taizé Prayer

Session



From the Pastor: A Tale of Two Campaigns

This coming Program Year (our active year of church programs runs from September to June) there will be TWO FINANCIAL CAMPAIGNS to fill the needs and extend the ministries and mission of the State College Presbyterian Church. During October and November will be the Annual Stewardship Campaign for the Operating Budget of the Church. Session will set the Goal Budget at its September meeting, and our needs for 2009 will be shared with you in October. Given the economic anxieties existing in our nation we know that this stewardship effort will be crucial to maintaining the high standards we have set for our church life. It is truly a faith endeavor, and I, as your pastor, have full confidence in the congregation's response in commitment to the church.

The Session and I also want you to know that in the Spring of 2009 we will hold a Campaign for SCPC to raise funds for projects over and above what can be funded through the Operating Budget. We will ask for pledges in the spring, with contributions spread over a three year period. Much more information will be coming about this campaign, but for now let me give you a preview of the three components involved:

1. **MISSION** - creating a FAITH FUND for expanded Mission endeavors;
2. **WORSHIP & MUSIC** - accomplishing a much needed MAJOR RENOVATION of the sanctuary Pipe Organ;
3. **BUILDING AND PROPERTY** - completing the electrical REWIRING of the 1941 Christian Education Building and renovating the FIRESIDE ROOM for Youth and Young Adult Ministries.

Please keep both of these important stewardship efforts in your prayers, and look for more information as the fall proceeds.

Chuck Curley, pastor

PW Fall Gathering Luncheon

All women of the State College Presbyterian Church and their guests are invited to the Presbyterian Women Fall Gathering Luncheon which will be held on October 6 at 11:00 AM in the Social Hall. Please meet at 11:00 AM for fellowship, 11:30 will be the Thank Offering and worship service followed by lunch at 12:00. An extra special program featuring the Penn State singing group "Essence of Joy" will perform at 1:00. All are welcome.

PW Dates to remember

September 10 - PW Board at 1:00 in the Library

September 15 - Esther/Ruth Circles meeting and lunch to be held at 11:30 AM at Esther Porter's house, 1449 West Park Hills Ave. Bring a salad of your choice to share.

September 16 - Rebecca Circle will meet on Tuesday, Sept. 16, 9:30 AM at the home of Kay McGear, 3201- 740 Shellers Bend (234-5060).



Handbell Choir rehearsals begin Tuesday, September 23, 7:15 PM in the Choir Room. We have a limited number of openings. High school students welcome. College students welcome. All other adults welcome. A little bit of music reading helps. Please let Ned know if you are interested or if you need more information (238-2422 or ned@scpresby.org).

September Services and Sermons

Wednesday, September 3, 2008 - Taizé Prayer

Sunday, September 7, 2008 - 9:00 & 11:15 AM
Al Wilson, preaching

Wednesday, September 10, 2008 - Taizé Prayer

Sunday, September 14, 2008 - 9:00 & 11:15 AM
Matt Falco, preaching

Wednesday, September 17, 2008 - Taizé Prayer

Sunday, September 21, 2008 - 9:00 & 11:15 AM
Alice Meloy, preaching

Wednesday, September 24, 2008 - Taizé Prayer

Sunday, September 28, 2008 - 9:00 & 11:15 AM
Charles Curley, preaching



WORSHIP WITH US!

State College Presbyterian Church Staff

Pastor - Charles Curley
ccurley@scpresby.org

Associate Pastor - Joel Blunk
jblunk@scpresby.org

Director of Education and Program - Deannine Shipman
dshipman@scpresby.org

Director of Music Ministry - Ned Wetherald
ned@scpresby.org

Associate in Ministry for College Age Ministries
Diana Malcom
dmalcom@scpresby.org

Program Associate - Martha Trout
mtrout@scpresby.org

Stay and Play Director - Laura Steager
jheckman@scpresby.org

Church Secretary - Janet Heasley
office@scpresby.org

Building Manager - Paul Sheets

Assistant Custodian - Nelson Hite

Weekend Custodian - Russell Bush

Treasurer - Sharon Kasting
treasurer@scpresby.org

Assistant Treasurer - Anne Thomas

Office Hours - 9 a.m. - 4 p.m.

Phone (814)238-2422

Fax (814)238-3524

Website - www.scpresby.org

All in the Family

Congratulations of the congregation on the baptism of:
Samantha Bell Smith, daughter of **Andrew and Rebecca (Patterson) Smith**, July 13, 2008.

Ronald Patrick Gilligan, son of **Ronald and Megan (Kelly) Gilligan**, July 20, 2008

Anna Margaret Stimmel, daughter of **Jason and Diana (Brown) Stimmel**, August 3, 2008

Isaiah Richard Sharda, son of **Daniel and Jori (Murchie) Sharda**, August 17, 2008

Eli Thomas Frank, son of **Jeremy and Amy (Stacy) Frank**, August 24, 2008

Congratulations of the congregation on the wedding of:
Kelly Booker and Matthew Kelly, August 2, 2008

Doug McLaughlin and Gretchen Gies, August 9, 2008 in California

Sympathy to friends and family on the death of:

Elmer Adams, **Andrea Cotner's** father, July 28, 2008 at age 101 (in Reading, PA)

Helen Riley, **Lora Moyer's** mother, August 6, 2008 at age 103

I would like to thank everyone in our congregation who took the time to send cards, emails, bring meals, and pray for me during my recovery from surgery early this summer. I am so thankful for this loving and caring congregation! Thank you very much!
-Deannine Shipman

Eleanor and I would like to thank all of you who sent prayers, cards, phone calls and food during my recuperation. It was greatly appreciated. The doctor has now given me clearance to resume normal activities (except golf!) so you will see me in church on Sunday. My thanks to all of you.



-Glenn Haney

I would like to thank everyone who sent notes, cards and other expressions of sympathy in the loss of my brother in late July. I also greatly appreciate all the wonderful "Get Well" cards, notes and phone calls that I received following my August 5 surgery. I hope to be singing again with the Chancel Choir later in September. Many thanks to one and all.

-Winnie O'Halloran

SCPC Campers At Krislund Camp

The following SCPC youth attended Krislund this summer. If you see them, please ask them about their awesome, spirit-filled week of camping. Jamie Bachman, Jessica Corte, Abby DeWolfe, Emily DeWolfe, Elena Lloyd, Grace Lloyd, Henry Lush, Lydia Malcolm, Gregory Manno, Joe Mount, Camden Nickell, Louise Page, Neil Porterfield, Elizabeth Potter, Garrett Rabian, Janice Rabian, Emily Reichard, Eric Reichard, Kelly Saylor, Emma Sutterlin, Jacob Van Hook

GIFT in September

GIFT will begin again on Friday, September 5. We will meet in the Fireside room at 11:30. Our next meeting in September will be Friday the 19th. At our first meeting we will discuss any books we read over the summer and choose a book to read and discuss for our meeting on the 19th. Please bring a lunch and join us. Coffee is always served. If you are interested in joining GIFT please contact Deb Becker at 692-7572. GIFT stands for "Growing In Fellowship Together". We are a group of women of all ages who enjoy reading books. We read books of all kinds and discuss them during our meetings. You are welcome to come just for the fellowship as well. We meet every other Friday unless there is no school. Please check the Sunday bulletins throughout the year for our book selections.



PARKING LOT RULES



First National Bank (Formerly Omega) Parking

As we start back with our busy fall program schedule we want to put out this important reminder. Omega Bank, now First National Bank, graciously allows us to park in their parking lot adjacent to the drive-thru branch on Allen Street WEEKDAYS AFTER 6:00 PM AND SUNDAYS ONLY. At all other times the spaces are reserved for bank employees to come and go as they need to and unauthorized cars will be towed at the owner's expense. If you are coming to the church to drop off or pick up your child at Stay and Play or for an after school/early evening weekday program please use the church parking lot, the municipal lot or the Beaver Avenue parking garage.

Beaver Avenue Parking Garage

Parking is free in the Beaver Avenue Parking Garage most Sundays. The biggest exception this time of year is Home Football Game Weekends, when the borough charges.

On Home Football Game Weekends, be sure to stop by the Welcome Desk (outside the church office) and pick up a parking voucher which will pay for your parking. There is no charge to the church for this service.

On regular Sundays, no parking voucher is needed.

Krislund Fall Work Day Set

The annual Fall Work Day at Krislund Camp will be held on Saturday, October 4 from 9:00 AM to 3:30 PM. Volunteers are needed to assist with indoor and outdoor work so the event will happen rain or shine. If you have specialized skills in plumbing, electrical or carpentry work, please let us know in advance so we can have materials ready. Lunch is included and reservations are encouraged but everyone is welcome to attend, even on the spur of the moment! Please contact the camp office at 814-422-8878 or via email at info@krislund.org to make reservations or to notify us of special skills or needs.



Children & Youth Sunday Morning Programs

The year officially begins on Sunday, Sept. 7th. Listed below are the rooms for all of our children and youth classes. Children must be the age of the class listed by Sept. 1st (or in that grade) to be in that class. Any questions or concerns may be addressed to Patt Campolongo (SS Superintendent), or to Deannine Shipman (Director of Education and Program).

Three Yrs.	Room 100	Four Yrs.	Room 103
Kindergarten	Room 203	1st Grade	Room 209
2nd Grade	Room 210	3rd Grade	Room 211&208
4th Grade	Room 206	5th Grade	Room 12
6th - 8th Grade (Middle School)	Fireside Room		
9th - 12th (Senior High)	Tower Room		

A list of Sunday School teachers is outside each classroom door.

The Sunday School Classes start at 10 AM. Children who go to a program such as Creative Movement and Music, or Children and Worship are taken directly to their Sunday School classes by the teachers. Children in 3rd Grade and older should leave worship and go directly to their classes.

This year in our Sunday School Classes we may only have weekly snack in the youngest classes. Snacks may be offered monthly in the older classes, but it all depends on parental involvement.

Parents are encouraged to sign up on snack sheets outside the Sunday School rooms.

Creative Movement and Music

Beginning on Sept. 7th, our pre school aged children (ages 3 - 5) are invited to join with music leader, Ellen Manno, in Westminster Hall for a time of music, movement, and fun! Ellen is assisted by one of our childcare workers, and youth leaders: Emma Sutterlin and Joshua Shipman. This program begins following the Children's Message during the 9:00 AM worship service. At the conclusion of this program, the children are escorted by their Sunday School teachers to their classrooms. This program is designed for children who are already 3 years old by Sept. 1st, 2008. Children turning 3 years old during the school year should wait until next Fall to join Creative Movement and Music, which is the same time they will start Sunday School. (Our Toddler Room is designed for ages 2 and 3.)



Children and Worship Class

Our Children & Worship program begins on Sept. 7th with leaders, Ronda Craig and Jody Barth. This program is for 1st and 2nd graders who choose not to stay in the earlier worship service. They meet in room 11 following the Children's Message during the 9:00 AM worship service. At the conclusion of this program, the children are escorted by their Sunday School teachers to their Sunday School classrooms.

FISH Registration & Ice Cream Social

FISH 2008/2009 (Fellowship In Senior High for grades 9-12) kicks off on Wednesday, September 3rd at 7:00 PM in the Church's Social Hall with our annual Ice Cream Social. This meeting is for high school youth and their parents to meet the FISH leaders, hear about this year's programs, activities, mission trips, and to register for the year. Information and registration forms for the Fall Retreat at Krislund (September 27-28) will also be available. There will be ice cream sundaes for everyone while you hear all about FISH. We encourage all high school students to come to FISH every Wednesday night. We start at 6:00 PM with dinner, followed by singing and then special and exciting programs every week. You do not have to be a member of SCPC to attend. All High School youth are welcome!! Any questions, contact Joel Blunk or Martha Trout in the church office (238-2422) or Patti Kephart (592-0149).

Please also remember to sign up for the SCFISH group email. It contains weekly information about FISH and our activities.

We hope to see old and new FISH kids and their parents on Wednesday, September 3rd in the SCPC Social Hall at 7:00 PM.

FISH Dates to Remember

- Wednesday, Sept. 3 - Ice Cream Social and Registration
- Weds., Sept. 10: 1st regular FISH meeting (6:00-8:45 PM)
- Saturday, Sept. 27 - Sunday, Sept 28: FISH Fall Retreat at Krislund (Seniors leave Friday evening, September 26)

Geckos + Chrysalis = LOGOS

LOGOS is our midweek ministry for children and youth in 1st through 8th grade. Each week we build relationships with each other and with caring adults from the congregation as we study God's Word together, play together, prepare to lead worship together, and eat and laugh together. All SCPC families and friends are encouraged to be part of this disciple building ministry. Below are some dates to remember, but if you would just like some more information contact Deannine Shipman (238-2422 or dshipman@scpresby.org), Ned Wetherald (238-2422 or ned@scpresby.org) or Diana Malcom (238-2422 or dmalcom@scpresby.org).

Annual LOGOS Kick-off Picnic, Tuesday, September 16, 5:30 PM at Spring Creek Park. We'll grill the hot dogs and hamburgers, you bring the sides and desserts!

First regular LOGOS afternoon, Tuesday, September 23, 4:00 PM for Geckos, 5:00 PM for Chrysalis.

Chrysalis – 6th, 7th, & 8th graders Prepare!

A few important dates to get on your calendars. One of the first things we do to begin the year is spend time with our new youth leaders – the 8th graders. They will have an overnight retreat to get the year started, after that, Chrysalis dates will be the same as LOGOS, with the addition of a Fall Retreat.

September 6 & 7 - 8th Grade Retreat (all incoming 8th graders)

October 24-26 - Chrysalis Retreat

Adopt A Night Program

It's fall and we are excited to begin our yearly enrollment for our Adopt A Night program. This will be our sixth year of helping our community neighbors.

Our SCPC congregation at large is committed to having two volunteers the third Friday of every month from September to August. Jan Mahar is the lead for these nights.

Our SCPC Men's Thursday Bible study has committed to taking the second Friday of each month, Brent Peters is the lead for these nights.

Sign-up sheets will be on the bulletin boards in Social Hall. Jan Mahar (867-4473) and Brent Peters will be available for any questions. Many have experienced the rewards of spending four hours (4:30 - 8:30 PM) with people who are staying at Centre House. As a reminder, you would bring ingredients for a dinner that you prepare with two of the Centre House residents, then sit and eat the meal with all the residents. Another group of residents cleans the dishes while you share the rest of the time in fellowship conversing with the residents.

Please look at your calendars now and let Jan or Brent know which evening will work best for you. Surely you will find this to be a rewarding experience.

WPF & CAM and what it Means to YOU.

They're back and we'll be the better for it! Isn't it a treat to be worshipping with so many wonderful young adults? Many will make this their church home-away-from-home, some will get involved in WPF ministries, and a few will even get involved in the various program and music ministries of SCPC. So, let's make them feel welcome. Make it YOUR job to reach out, shake their hand, offer to show them where Coffee Hour happens, take them to the Library for College-age Sunday School, and/or give them some WPF flyers (back of sanctuary).

We're also looking for folks to help out with specific tasks. Maybe you will pray about the opportunity to share YOUR gifts! Do you like spending time with young adults? Enjoy hosting and/or offering food? Can you help us plan (every other month meetings)? We have many different needs. If you'd like to learn more about Westminster Presbyterian Fellowship (WPF) programs or would consider serving on our College Age Ministries (CAM) Committee, contact Katie Stone, our chair @ 235-0995 or Diana Malcom.

CC Bridge Building Continues

Last year SCPC had 7 (yes, seven!) students spend time doing vocational discernment. Now we continue our exciting outreach program for students and young adults interested in considering their call. The "College to Congregation Bridge for Theological Discernment" (CC Bridge) encourages students to consider what it means to serve in the church and equips participants in discerning their own unique gifts. Participants will be part of a small group, led by a leader-facilitator helping the group explore how God has gifted them and what God might be asking them to do with their gifts.

Have questions or know of anyone who might be interested in participating (can include folks outside the SCPC congregation!)? For more detail, contact Diana Malcom or Kim Hunziker.

Greetings from Thailand

Lance, Debbie, Elizabeth, Riley, Jenae, and Callie Potter

We arrived safely in Chiang Mai, Thailand on July 24th or 24 July as they would say here. The journey had its trying moments, especially the cancellation of our first flight and a very long walk in the Bangkok airport with 4 children and 12 carry-ons of various sizes. But at the end of it Deb looked at Lance and said, "Well, that wasn't nearly as bad as it could have been." Thanks to all of you who had us covered with prayer on our journey.

We've moved into a new house with a guest room. (Think vacation in Thailand with the Potters). Our home came "furnished", so we've had to spend some time and money getting dressers, more beds, bookshelves, a kitchen cupboard, a sofa and chair set, and the like. Shopping can certainly add to the culture shock and stress level. Thankfully, most of the shopping is done now. Once again we thank SCPC for its generous contribution to our travel costs and individuals for their monetary gifts. Without that help, we would have been in a real bind here from day one.

Lance began working just about as soon as we arrived. Though officially he didn't head straight into the office, he was glean- ing much information about the atmosphere among the teachers just by being social. It has been great to see old friends and we all feel as if we're being sincerely welcomed back. The Thai director of the school even thanked God for Lance's presence, in Lance's presence, after an initial meeting with the school leadership team. So that's good.

The girls all began school on 13 August, a Wednesday. Elizabeth and Riley are both at CMIS (with Lance) and have old friends of ours as teachers, which we're happy about. They both know or have gotten to know several kids in their class. Jenae and Callie are at a preschool in the morning that is just up the road from CMIS and seem to be enjoying themselves.

If you're inclined to pray for us our requests are: That Lance would show compassion and discernment with the teachers and be able to keep reasonable work hours, that Debbie would be able to accomplish many things in the morning hours and be free to play with her kids after preschool and regular school, that Elizabeth and Riley would continue to thrive and build good relationships, that Jenae would feel settled here and get used to the idea that this is her new home and that we're not just visiting, that Callie would show more reasonable responses without yelling as a primary means of communication. If you would like to contribute financially please put a check payable to "Huntingdon Presbytery" in the offering designating it for "Mission Interpreters: Lance/Deb Potter".



Chancel Choir rehearsals begin Thursday, September 4, 7:00 PM in the Choir Room. All interested singers are invited. We have openings in every section. High school and college students welcomed! Please join us any Thursday evening or contact Ned for more details (238-2422 or ned@scpresby.org).

Adult Education in September

We welcome you to a new season of Adult Ed offerings. We believe you will find these sessions and those to come of value for both information and spiritual enrichment. Classes begin at 10:15 AM. It is wise to check each week's bulletin for any updates.

Class Offerings	September			
	7	14	21	28
God's Work in Montgomery, West Virginia	x			
SCPC Mission: Partners in Service		x		
Jesus as the Servant and the Prophet		x	x	x
Spiritual Formation through Small Groups			x	
Helping Parents Transition Their Children to College				x

Class descriptions:

"God's Work in Montgomery, West Virginia" Rev. Joan Stewart and Tim Stewart manage the Christian Ministry in which a group of our members worked last spring. Now the Stewarts come to us to describe their overall mission within the West Virginia Ministry of Advocacy and Workcamps (WVAMAW). The Presbyterian Church USA supports their work to partner with those in need who have been devastated by disasters and poverty in that WVA area.

"SCPC Mission: Partners in Service" Katherine Allen, Chair of the Mission Ministry Unit, provides this description: Please join members of MMU as we begin the first of a periodic series on SCPC's Mission Partners and how we address the needs of Food, Water, Shelter, Health, and Community through our mission gifts. Beginning Sept. 14th and continuing on the second Sunday through the Fall, we will highlight the work of our SCPC mission partner agencies and the programs in the local, national, and international communities.

"Jesus as the Servant and the Prophet of the Kingdom of God" Shirley Berlind bases this three-week series on an essay by N.T. Wright, a bishop in the Church of England. Wright believes that Jesus interpreted his ministry as Servant by his understanding of Isaiah 40-55. Also Jesus was called by God as Prophet to announce the Kingdom of God as found in Isaiah 52:7-12. The class's first week will review and critique Wright's interpretation. Week two will read and discuss the key verses of Isaiah. The final week will discuss evidence of God's Kingdom in our world today.

"Spiritual Formation through Small Groups" Small groups can be a great way to meet other people at State College Presbyterian Church, and can also be a very effective way to strengthen one's faith--through Bible study, fellowship, book studies, or engaging in interests shared by others. There are many small groups at SCPC, but sometimes it is hard to identify exactly where one will fit in most comfortably. On September 21st, the Spiritual Formation Task Force will be hosting an event during the Sunday school hour to help people learn more about small groups at the church. In addition to introducing some of the existing groups, we'll be forming new LIFE groups. LIFE groups are designed to help our congregation members get

Adult Education continued

acquainted with each other through a program exploring a number of different spiritual practices like Bible Study, service to others, prayer, and meditation.

"Helping Parents transition their Children to College" Bonnie Benjamin works in the Office of Student Aid at PSU. She will discuss factors that assist parents in preparing their children for a smooth transition into first-semester college work and life. Join her for a discussion of situations she has encountered and how they illuminate issues both parents and students face in this critical transition.

Krislund Campaign Update

In July the church received a letter from our Executive Presbyter Joy Kaufmann, and the presbyters of Carlisle and Northumberland giving an update on Camp Krislund. The following are excerpts from that letter. Anyone who would like to read the whole letter should call the church office for a copy.

We write to express our grateful appreciation for the generous support which many of our congregations have already pledged toward our *Funding the Future Campaign* at Camp Krislund. We also write to offer this brief status report.

We have paid more than \$460,000 toward our land debt. We expect that our commercial land debt with NorthWest Savings Bank will be completely paid this year! This is the first major component of our campaign. Gifts from our *Funding the Future Campaign* are not intended to pay off our other significant land debt which is held by the Synod of the Trinity.

We are ready to move forward with the two major infrastructure demands of any new construction: water and sanitation. With an estimated cost of \$170,000, we expect the Camp's new water system to be installed this fall. After satisfying stringent environmental regulations, our new well has been drilled and the system is ready to be installed. The next step, to be accomplished in 2009, is the installation of our new sanitation system.

Of course, any project the size and scope of our *Funding the Future Campaign* will face obstacles and challenges. Our biggest challenge thus far has been the concept of new adult housing at the Camp. The concept of one large adult lodge attached to the back of the existing retreat center has proved untenable because of construction and environmental-impact costs created by its sweeping design. Thus we have formed a Design and Construction Team to consider other options for adult housing at the camp. (*SCPC Pastor Chuck Curley is a member of this Team*) Conceptually, this team has decided to take a step back and consider again any and all options for adult, year-round housing at the Camp given our theological vision of ministry, the restraints of the legal and environmental regulations and the financial constraints of the *Funding the Future Campaign*.

As our *Funding the Future Campaign* has developed we sadly learned that our creative plans for an "omni building" can not be included within our current campaign. Thus our plan for this multi-purpose building which will support our Summer Camp program and also offer flexible, indoor recreational opportunities all year remains a dream.

Adult Education continued in the next column

September

State College Presbyterian Church

Sunday	Monday	Tuesday	Wednesday	Thursday	Friday	Saturday
	1 Labor Day Church Building Closed	2 9:00 Stay & Play Meet the Teachers 12:30 WPF Bible Study (Redifer)	3 Stayand Playbegins 1:00 Prayer 4:00 Finance 5:00 Taizé 7:00 CFMU 7:00 FISH Ice Cream Social	4 WPF to Spikes Game 6:00 Agape 7:00 Chancel Choir 7:30 Scouts	5 FISH Leaders Retreat 11:30 GIFT	6 FISH Leaders Retreat Chrysalis 8th Grade Retreat Oregon State @PSU
7 \$ 9:00 Worship 10:00 Sunday School 11:15 Worship 7:00 Deacons FISH Leaders Retreat	8 7:30 AM Building & Property	9 12:30 S & P Staff 12:30 WPF@ Redifer 3:00 Brookline Soc 5:00 MMU 6:30 LOGOS Trng 7:30 Scoutmaster Council	10 1:00 Prayer 1:00 PW Board 4:00 Finance 5:00 Taizé 6:00 FISH	11 6:00 Agape 6:30 Scout Patrol Leaders 7:00 Adult Ed 7:00 Chancel Choir	12 PresbyPost Deadline Chrysalis Leaders Retreat	13 WPF Habitat Day PSU@Syracuse Chrysalis Leaders Retreat
14 9:00 Worship 10:00 Sunday School 11:15 Worship 12:15 WPF Lunch 7:00 Session	15 11:30 Esther & Ruth Circles 7:00 Scout Troop Committee 7:00 S & P Board	16 9:30 Rebecca Circle 12:30 WPF@Redifer 5:30 LOGOS Picnic @ Spring Creek Park	17 1:00 Prayer 5:00 Taizé 6:00 FISH	18 1:00 Bible Study @ J. Johnson 6:00 Agape 7:00 Chancel Choir 7:30 Scouts	19 11:30 GIFT 5:00 Young at Heart	20 9:00 Praying Hands Temple@PSU
21 \$ 9:00 Worship 10:00 Sunday School 11:15 Worship 12:15 Grad Lunch Habitat Dinner and Celebration	22 7:00 EMU	23 12:30 WPF@Redifer 4:00 LOGOS Geckos 5:00 LOGOS Chrysalis 7:15 Handbell Choir	24 1:00 Prayer 5:00 Taizé 5:15 Personnel 6:00 FISH	25 6:00 Agape 7:00 Chancel Choir 7:30 Scouts	26 FISH Fall Retreat	27 Illinois @ PSU FISH Fall Retreat
28 \$ 9:00 Worship 10:00 Sunday School 11:15 Worship FISH Fall Retreat	29	30 12:30 WPF@Redifer 4:00 LOGOS Geckos 5:00 LOGOS Chrysalis 7:15 Handbell Choir		Abbreviations CFMU = Congregational Fellowship Ministry Unit EMU = Education Ministry Unit MMU = Mission Ministry Unit PW = Presbyterian Women S & P = Stay and Play Preschool WPF= Westminster Presbyterian Fellowship (college age) \$ = Beaver Avenue Parking Garage charging		

STATE COLLEGE PRESBYTERIAN CHURCH
132 West Beaver Avenue
State College, PA 16801

NONPROFIT ORG.
U.S. POSTAGE
PAID
STATE COLLEGE, PA
PERMIT NO. 69



Vol. XLX

Number 8

Visitation Deacons

Visitation Deacons are members of the congregation who are specially ordained and installed for the purpose of calling on shut-ins. Every month each Deacon visits one or more of our members who are confined to their homes, living in retirement communities, or nursing homes, or limited in their ability to be a part of the life of the congregation. If you know someone who would appreciate such a visit, talk with Chuck Curley or one of the Visitation Deacons.

Class of 2008

Jo Dixon
Jo Keiser
Kay McGearry
Barbara McKeehen
Guy Thompson

Class of 2009

Martha Frye
Marilyn Jenkins
Janice Johnson
Jane McKinley
Linda Morrow
Harry Salmon

Class of 2010

Winnie O'Halloran



Visitation
Deacons

NEWSLETTER STAFF

Charlotte Baldwin
Lina Hood
Jane Linsky
Brenda Loftus
Winnie O'Halloran
Cheryl Price
Ned Wetherald